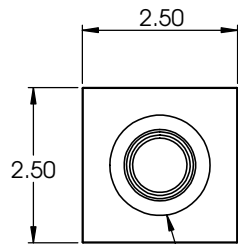
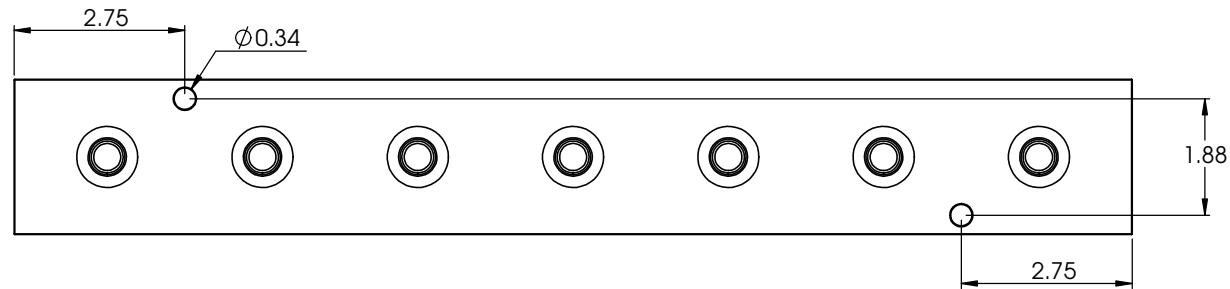
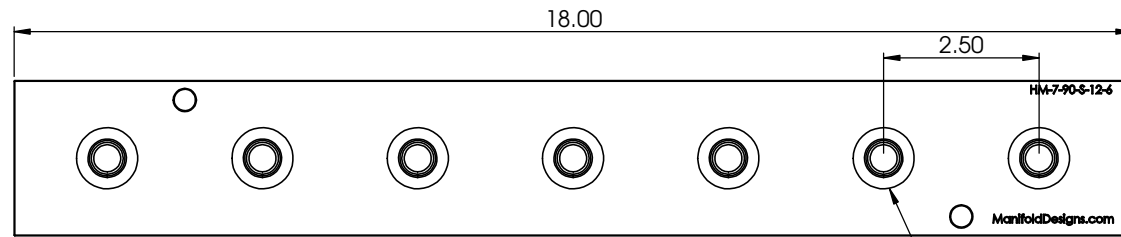


4

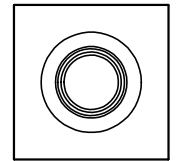
3

2

1

# 12 ORB
Both Ends

6 ORB Typ Face

**MDP**

Manifold Design & Production Inc.

PROPRIETARY AND CONFIDENTIAL
THE INFORMATION CONTAINED IN THIS
DRAWING IS THE SOLE PROPERTY OF
<INSERT COMPANY NAME HERE>. ANY
REPRODUCTION IN PART OR AS A WHOLE
WITHOUT THE WRITTEN PERMISSION OF
<INSERT COMPANY NAME HERE> IS
PROHIBITED.

| | | | | | | |
|-----------|---------|---|--------------------|------|--------------------------------------|----------------------------|
| | | UNLESS OTHERWISE SPECIFIED: | NAME | DATE | TITLE: Header Manifold | |
| | | DIMENSIONS ARE IN INCHES TOLERANCES: FRACTIONAL ± ANGULAR: MACH ± BEND ± TWO PLACE DECIMAL ± THREE PLACE DECIMAL ± | DRAWN | | | |
| | | INTERPRET GEOMETRIC TOLERANCING PER: | CHECKED | | | |
| | | MATERIAL 6061 | ENG APPR. | | | |
| | | FINISH Black Anodize | MFG APPR. | | | |
| | | DO NOT SCALE DRAWING | Q.A. | | REV | |
| | | | COMMENTS: | | | |
| NEXT ASSY | USED ON | APPLICATION | SCALE: 1:1 WEIGHT: | | SIZE B | DWG. NO. HM-7-90-S-12-6 |
| | | | | | SHEET 1 OF 1 | |

4

3

2

1